

# LANDLINES

YOUR CONNECTION TO PIEDMONT LAND CONSERVANCY

## Mt. Shepherd in Randolph County Forever Protected

Piedmont Land Conservancy is proud to announce the permanent protection of Mt. Shepherd in Randolph County, home to the Mt. Shepherd Retreat Center. Through a conservation agreement, 274 acres is now forever preserved—including the expansive, forested slopes that make up the county's highest point.

"Partnering with Mt. Shepherd to protect this iconic property makes sense on many levels," says Kevin Redding, PLC's Executive Director.

"Many ecological reasons exist to conserve this beautiful landscape, but equally as important is that the property will remain a place for young people to connect with nature."



The view from atop Mt. Shepherd.

Josh Britton, Executive Director of the Center, adds, "Mount Shepherd is thrilled to partner with PLC in preserving some of our most precious resources. For more than 60 years, Camp Mount Shepherd has existed to provide sacred encounters with God through our programming and hospitality. Part of our mission has also included teaching environmental stewardship. This project enables two things that are at the core of our mission. It not only empowers long-term ecological sustainability, but also this easement empowers financially sustainable ministry through its funding. We are thankful for the graciousness and generosity of all those who have been involved."

Mt. Shepherd is unofficially recognized as the northern end of the Uwharrie Mountains, which stretch from Randolph County to Montgomery, Davidson and Stanly Counties, and represent one of the oldest mountain chains in North America. After millions of years of weathering, these once 20,000 feet high peaks have eroded to the small mountains they are today. Mt. Shepherd is one of the highest Uwharrie peaks at an elevation of 1,157 feet, and dominates the skyline as seen from U.S. Highways 64 and 220.

*(continued on page 6)*

***Piedmont Land Conservancy*** protects our region's natural lands, farms and waters for present and future generations. PLC connects people with nature.



2017-2018

## Board of Directors

**Mary Joan Pugh**, *President*  
**Fred L. Berry**, *Vice President*  
**Marcus L. Moxley**, *Secretary*  
**Katherine L. Homiller**, *Treasurer*

\*\*\*\*\*

**Doug Canavello**  
**David Couch**  
**David Duff**  
**Steve Earp**  
**Michael R. Hough**  
**N. Jane Iseley**  
**Frankie T. Jones, Jr.**  
**Andrea Moore**  
**Matt Perry**  
**Joe Phagan**  
**Jeri Rowe**  
**Shane Shuler**  
**Steve Tate**  
**D. Sam Thompson**  
**William W. Truslow, MD**  
**Chris Wagner**

## Board of Advisors

<b>Carolyn Allen</b>	<b>David Jones</b>
<b>Malcolm Brown</b>	<b>Cama Merritt</b>
<b>Patty Brown</b>	<b>Robert Merritt</b>
<b>Charles Brummitt</b>	<b>Dennis Quaintance</b>
<b>Eric R. Calhoun</b>	<b>Bo Rodenbough</b>
<b>Lucy Chatham</b>	<b>Bill Ross</b>
<b>Richard Everhart</b>	<b>Kay Stern</b>
<b>Pricey Harrison</b>	<b>Kathy Treanor</b>

## Staff

**Kevin Redding**, *Executive Director*  
**Kalen Kingsbury**, *Associate Director*  
**Ken Bridle**, *Stewardship Director*  
**Josh Horton-Campbell**, *Land Protection Associate*  
**Greg Keener**, *Development Director*  
**Lynne Dardanell**, *Communications & Outreach*  
**Jeri Donnelly**, *Office Manager*  
**Palmer McIntyre**, *Conservation Planner*  
**Mindy Mock**, *Land Protection & Outreach*  
**Taylor Owens**, *Database Specialist*

## A Note from PLC's Director



### Put the Knight Brown Nature Preserve on Your Summer List

On the Friday evening before Earth Day, PLC held a special dedication at the Knight Brown Nature Preserve. A new trail will be added to the Preserve in memory of Tucker Overbey, a young lover of the outdoors who passed much too early. Tucker's mother delivered a beautiful poem that emphasized her late son's love of hiking, exploring and just being in nature.

Following the dedication my daughter, Molly Ruth, and dog, Rosie, and I took a short hike. Within minutes, Molly Ruth had found another friend to explore the creek with. No phones, no televisions, no worries. Just good old-fashioned childhood memories made while jumping from rock to rock. Then, of course, Rosie had to join in the fun.

With summer now in full swing I hope you will find a morning, or evening, to visit this new trail. While there check out the other three miles of beautiful, forested trails available to all. I'm confident you'll enjoy your time there.



Tucker Overbey's friends working together in his memory on the new trail at Knight Brown Nature Preserve in June (Father's Day weekend).



## Meet Josh Horton-Campbell, Land Protection Associate



Josh joined PLC in April 2017 after spending several years as a residential land development attorney in Raleigh. This move more closely aligns his career with his values, and PLC benefits from his real estate expertise. His position at PLC is made possible by funding from **Z. Smith Reynolds Foundation** and the **Winston-Salem Foundation**.

Josh grew up on a 12-acre historic farm outside of Philadelphia, near Amish country. He braved the bugs and the bees and developed a deep appreciation for all things nature while exploring a creek that bordered his childhood property. Little did he know that these memories of enjoying the outdoors would become relevant to his career at Piedmont Land Conservancy.

Josh holds a B.A. in Anthropology with a concentration in Religious Studies from University of Pittsburgh, and a J.D. from Duquesne University School of Law with a focus in public interest. Since 2007, Josh has been working with his wife to build a homestead and permaculture food forest on their 40-acre family farm in Snow Camp. He also enjoys singing and making other “joyful noises” with his ukulele, theremin, jaw harp, and any other instrument he gets his hands on.

As PLC’s newest staff member, Josh is learning all about the vital ways that PLC protects land, farms, and watersheds. Working for PLC is a realization of a goal that was nearly ten years in the making, and Josh looks forward to getting to know the land and people that encompass PLC’s nine county service area.

**Welcome, Josh!**

## Meet Aaron Cinque, PLC’s Summer Intern

PLC is fortunate to have intern, Aaron Cinque, working with us this summer. Aaron recently graduated from N.C. Agricultural and Technical State University with a B.S. in Agriculture and Environmental Systems and a concentration in Sustainable Land Management. Aaron also has a professional certificate in Invasive Plant Management. He comes to us as part of the **Conservation Trust for NC’s Diversity in Conservation Internship Program**.

Aaron’s big project at PLC is setting up a database for land protection staff to better track projects and stewardship, which will save staff a lot of time and make information more accessible. When he is not hard at work in the PLC office, Aaron has been out building trails at both Knight Brown Nature Preserve (Rockingham County) and one of our more recently protected projects, Faith Rock (Randolph County). He and his wife, Bayle, live on their farm in Seagrove where her family owns and runs Jugtown Pottery.

**Welcome, Aaron!**



# Historic Surry County Land Put to Best Use



One of several tributaries that originates at Wellspring Mountain.

Wellspring Mountain, an herbal retreat and conference center located near Lowgap, NC has now officially purchased the land from PLC that it sits on, a 500-acre property that was previously Camp E-Munta-lee and home to the Eckerd Youth Alternatives program for troubled youth. In addition to beautiful woodlands, the property also includes a 40-acre campus with 18 structures for lodging and activities.

This purchase is made possible by a loan from Natural Capital Investment Fund, which supports entrepreneurs who are creating jobs and triple-bottom-line businesses in underserved communities throughout Central Appalachia and the Southeast. Acquiring this land affords

Wellspring Mountain (and the Eclectic School of Herbal Medicine which is part of Wellspring Mountain) a permanent location where it will continue to offer onsite herbal training classes, conferences and other events. The school is run by Thomas Easley, the well-known herbalist and author of *The Modern Herbal Dispensatory*, and his wife Terrie Easley. The couple relocated their herbal medicine clinic from Alabama to North Carolina in March of 2015 when they learned the property was up for sale and have been busy returning the camp's facilities to working order.

"This land has held a special place in my heart since I worked here in 2003 for Eckerd," said Terrie Easley. "Promoting environmental conservation and education are our two main goals, and we are very grateful to Piedmont Land Conservancy and NCIF for their unwavering support of our vision."

"NCIF is proud to support the Easleys, whose business contributes in important ways to the local community and economy," said Anna Tefft, Director of Lending for NCIF. "Their commitment to preserve this important natural space and to ongoing connections with the local community through education and events embodies perfectly our mission to support green local economies. We're grateful to the Piedmont Land Conservancy for their important role in making this deal possible."

*(continued on next page)*



Children enjoying Wellspring Mountain at one of the many events held here throughout the year.



# Alamance County Farmland Protected



Left to right: Jonathan Lanier, North Carolina Agricultural Development and Farmland Preservation Trust Fund, Simon Stephens, and Brad Moore, Alamance County Soil and Water District Administrator.

Piedmont Land Conservancy completed an agricultural easement on the Simon Stephens farm in the southern part of Alamance County on March 21, 2017. This project was the first farmland protection project in partnership with Alamance County Voluntary Agricultural District Board. Because of its proximity to Chapel Hill, the southern part of Alamance County has experienced tremendous development pressure so this is an important step to protecting farmland in this area. It is very close to earlier PLC projects near Sutphin-Mill.

The easement protects 75 acres of a 300-acre farm that was established in the 1850s. It is the site of an historic pottery kiln known as the Albert Loy kiln and was part of a thriving Quaker community known as Snow Camp.

Simon Stephens inherited the land from his father who originally grew tobacco and other

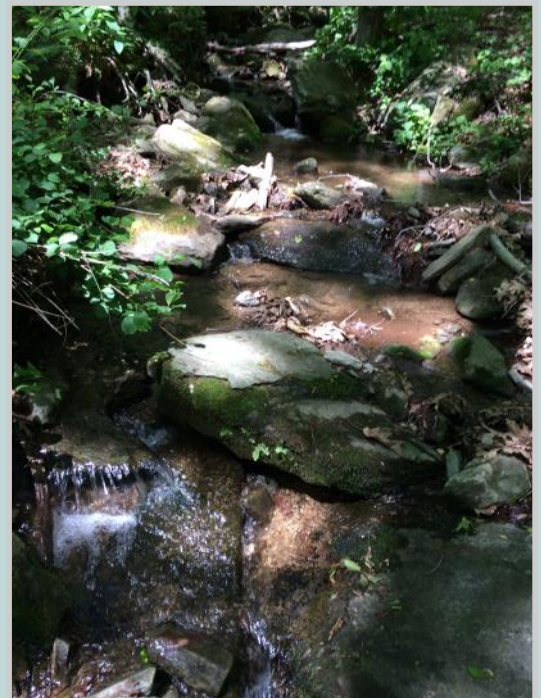
crops. Simon Stephens operates a beef cattle operation on the farm and also produces hay.

Alamance County received a grant from the North Carolina Agricultural Development and Farmland Preservation Trust Fund in 2015 to purchase the development rights on this portion of the farm. The partnership with Piedmont Land Conservancy came about because the Voluntary Ag District Board needed help with the legal work necessary to complete an easement as well as the grant reporting.

*(continued from page 4)*

The Wellspring Mountain property was originally given to The Nature Conservancy by James G. and Helen C. Hanes in 1978. In 2000, The Nature Conservancy conveyed the land to PLC, which leased the property at no cost to Eckerd Youth Alternatives until 2010, when state budget cuts forced the closure of the camp. The Eckerd program provided a unique, alternative education program for at-risk teenage youth, who lived in tents year-round and were taught survival skills in addition to continuing their conventional education.

PLC will use the funds from the sale to support other conservation projects in the Piedmont. "We're very pleased to have found a buyer whose conservation values and appreciation of the ecological significance of this property are similar to the Conservancy's", says Kevin Redding, PLC's Executive Director. "This is a great example of how conservation, education and economic development all complement each other."



# First Phase of Major Dan River Project Completed

On June 27<sup>th</sup>, PLC assisted the **N.C. Wildlife Resources Commission** with the purchase of 660 acres along the Dan River, just west of Eden. WRC will own and manage the property as a public game land, the first of its kind in Rockingham County, and the closest to Greensboro.

PLC has held an option on the Galloway Farm since December of 2015 and has been working with various partners and funding agencies to find the right long-term holder of the land. This first closing was completed with \$600,000 in funds secured by PLC from the **National Fish & Wildlife Foundation (NFWF)**. WRC was able to leverage \$1,000,000 from the **Pittman Robertson Act** – a federal surcharge on outdoor recreational equipment that flows back in to conservation. Together these funds allowed for the purchase of the first 660 acres of the Galloway Tract, which includes nearly 1.3 miles of frontage on the Dan River.

PLC is now working with other funding sources to complete the acquisition of the remaining 1,100 acres with nearly three more miles of river frontage in the next year. Stay tuned for more conservation successes stories!

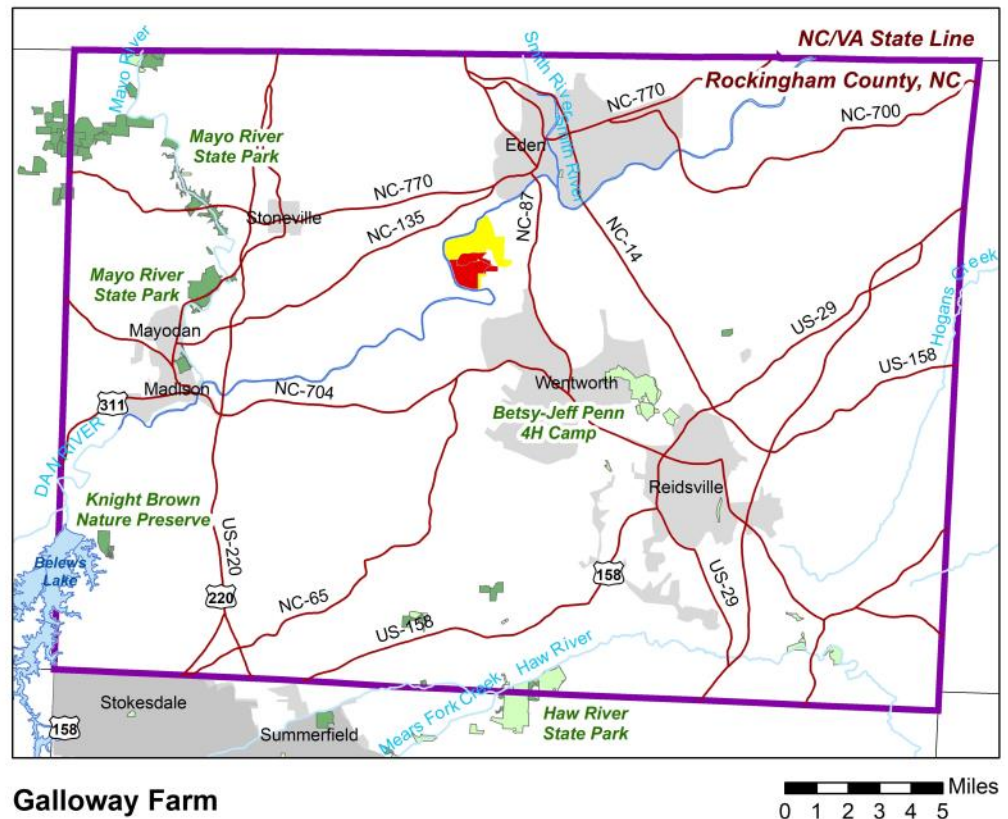


Photo by Virginia Weiler



Photo by NC Wildlife Resources Commission

The game lands will be managed to benefit turkey, deer, quail and other non-game species. The federally endangered Roanoke Logperch, found in the Dan River next to the Galloway Farm.



# Nature Note: Crested Coralroot on Mt. Shepherd

by Moni Bates, Contributing Writer



Crested coralroot photo by  
Crystal Cockman, Land Trust  
for Central NC

One rare plant found on Mt. Shepherd in Randolph County is a native orchid, *Hexalectris spicata* (Crested coralroot). Crested coralroot ranges from Maryland south to Florida and west to Ohio and New Mexico, where it is more common in the western states. It prefers soils that are more basic (not acidic), which can be found in the ancient, decomposed volcanic rock that occurs in this special area. Only periphery populations occur in North Carolina, and because of its limited habitat and marginal populations, crested coralroot is listed as Significantly Rare in this state by the NC Natural Heritage Program.

Lacking chlorophyll, crested coralroot is saprophytic, which means instead of photosynthesis it obtains nourishment by absorbing decayed organic matter. Its 6" – 30" tall stem is flesh-colored.

The flowers steal the show. During the summer months, the spike supports orchid flowers with yellowish petals striped with purple and brown lines. Like many orchids, its flowering is unpredictable, so finding it in bloom takes some



A panoramic view from the top of the fire tower on Mt. Shepherd.

(continued from page 1)

As a prominent landscape feature, Mt. Shepherd has played an important role in history. Its distinct rocky ledges and caverns attracted Native Americans more than 12,000 years ago as a place of shelter. Its location attracted Randolph County's first pottery manufacturer between 1775 and 1800. And, the mountain is said to have helped hide runaway slaves as part of the Underground Railroad.

Delos and Mary Hedgecock originally donated 542 acres to the Methodist Conference in 1961 and the property has operated as a camp and retreat center since. The conservation easement preserves the slopes and forests on Mt. Shepherd and ensures this state-designated natural heritage site remains protected forever.

Per the terms of the agreement, the Center will continue utilizing the protected areas for educational and recreational uses. More intensive use such as development, road building and commercial forestry will be prohibited. *Stay tuned to PLC's web site for a fall hike on this property!*

Funding for this project was made possible by philanthropists **Fred and Alice Stanback** of Salisbury and **Tim Sweeney** of Cary. Grants from the **Conservation Trust for North Carolina** and the **Tom & Elaine**

## Volunteer Conservationist of the Year—John McLendon



This spring PLC Board member John McLendon was awarded the **Stanback Volunteer Conservationist of the Year** at the Land Trust Assembly in Hendersonville, NC. He was nominated by Piedmont Land Conservancy and Blue Ridge Conservancy.

John has been a tireless champion in the work required to open PLC's Knight Brown Nature Preserve. His attention to detail enabled PLC to work through the steps necessary to obtain rezoning, garner neighborhood support, and create a management plan for the Preserve. Today, after eight years of persistence and five separate land transactions, the Knight Brown Nature Preserve's beautiful trails attract visitors from all over the region.

With a lifelong commitment to conservation and as a tireless champion in the fight to permanently protect North Carolina's farms, waterways and special natural areas, John embodies all the qualifications of a Stanback Volunteer Award winner. He

has served as a member of the PLC Board of Directors since 2011 (retired from the Board as of July 2017), and he and his wife Connie are active members and supporters of Blue Ridge Conservancy and hope to protect their Avery County property with a conservation easement. He demonstrates his personal commitment to teaching the next generation to preserve and protect our natural resources through his involvement with and financial support for the North Carolina Youth Conservation Corps. He also continues to support the Vermont Land Trust in his native state.

"John is an extraordinarily talented visionary; he may be the most detail-oriented, big picture thinker I've ever met," said PLC Executive Director Kevin Redding. "He doesn't just steer the policy in seemingly always the right direction, he's the first one in line to roll his sleeves up and help us navigate the most complex of projects." **Congratulations, John — Thank you for your leadership on the PLC Board!**

## Special Thanks Also to These Retiring Board Members



PLC thanks these outgoing Board members (pictured left to right): Missy Rankin (Randolph County), Scottie Neill (Forsyth County), Mary Ellen Boelhower (Guilford County), and Ed Evans (Alamance County).



# PLC — Connecting YOU with Nature

***Join us this fall for 2nd Saturday Outings — monthly nature outings for people of all ages!***

Saturday, September 9 — Paddle Trip Yadkin River (Yadkin County)

Saturday, October 14 — Fall Hike (location TBD)

Saturday, November 11 — Hike & Tour Mt. Shepherd (Randolph County)

December 9 — Mindfulness Walk at Knight Brown Nature Preserve (Rockingham County)



You won't find these friends on FaceBook — but you might find them outdoors on PLC-protected land!  
Baby turtle: Lindale Farm — Black snake: Knight Brown Nature Preserve — Bear cub: Surry County

## ***Green Reads Nature Book & Film Club***

All sessions are held at PLC-protected Price Park in Guilford County, in the Community Room of the Kathleen Clay Edwards Family Library. Everyone is welcome!  
Email [ldardanell@piedmontland.org](mailto:ldardanell@piedmontland.org) for more information.

Wednesday, August 30, 7-8pm

Film: Inconvenient Truth

Friday, September 22, 12-1pm

Book: The Best American Science & Nature Writing

Wednesday, October 25, 7-8pm

Film: Silent Spring

Friday, November 18, 12-1pm

Book: Flight Behavior by Barbara Kingsolver



Photo by Hart Linker

## ***Volunteer Workdays in Friendship Garden at the Emily H. Allen Wildflower Preserve***

Friday, September 8

Saturday, September 23

Friday, October 13

Saturday, October 28

All workdays are held from 9am-12noon, with lunch provided.  
Email [mmock@piedmontland.org](mailto:mmock@piedmontland.org) for more information or to sign up.

# PLC Volunteers Hard at Work

## ***Faith Rock Nature Preserve —***

High school volunteers from the **NC Zoo School** joined other PLC volunteers on a recent Saturday to help complete a new walking trail at **Faith Rock Nature Preserve** in Franklinville (Randolph County).

They spent the morning clearing and trimming branches, removing roots and putting the finishing touches on a  $\frac{3}{4}$  mile trail that will allow visitors to enjoy the scenic beauty of this nature preserve and Faith Rock itself.

**Thank you, NC Zoo School volunteers!**



## ***Knight Brown Nature Preserve —***

Volunteers from **VF Corporation** celebrated Earth Day at **Knight Brown Nature Preserve** in May by helping build a new trail, aptly named “A Poet’s Walk”, in memory of Tucker Overbey who passed away in 2015.

VF volunteers worked hard to get most of the trail established in just a few hours. Look for an official opening soon!

**Thank you, VF Corporation!**

## ***Historic Bethania —***

The **Town of Bethania** and PLC teamed up with volunteers from **BB&T** to improve the **Black Walnut Bottom hiking trail** in the historic town of Bethania.

Associates from **BB&T Corporate** volunteered a day in May to help install new hand-made benches, spread mulch and remove invasive plants from the much loved hiking trail.

**Thank you, BB&T!**



## ***Lindale Farm —***

**Caldwell Academy** middle school students picked up trash along the Deep River at Lindale Farm in Guilford County as part of their annual Caldwell Compassion Day.

PLC Stewardship Director, Ken Bridle, first gives the kids a lesson in why protecting your local watershed is important.

**Thank you, Caldwell Academy!**



# Land Trust Day Success – Thanks to Community Partners!

## A note of thanks for helping PLC protect more farms, waterways and green space ...

PLC extends a warm thank you to **Great Outdoor Provision Company** (in Greensboro and Winston Salem), **Mast General Store** in Winston Salem, and **Four Saints Brewing** in Asheboro for raising several thousand dollars for local land protection on Land Trust Day in June.

Thanks to these generous merchants, and to YOU — the shoppers and PLC supporters — we can protect more beautiful lands that you can enjoy all year long. **Thank You!**



## A new tradition started for Land Trust Day ....

Live music by **The Alley Rabbits** in Greensboro, and by **Wurlitzer Prize** in Winston Salem.  
Thank you to these generous musicians for donating their time to Land Trust Day!

## Check out our new tees, produced locally by Mindful Supply & TS Designs!

*(Thanks to Mindful Supply for donating the design!)*

If you didn't get one on Land Trust Day,  
we still have some left in the PLC office.  
Just give us a shout and come by,  
or we'd be happy to mail one to you.

Cost of the shirt is \$20.00 (post-Land Trust Day discount).  
And, it buys you a one-year membership to PLC.

Get one as a gift and we'll extend a  
gift membership to the recipient!

Email [ldardanell@piedmontland.org](mailto:ldardanell@piedmontland.org) to order  
or inquire about a shirt,  
or call **336-691-0088** to come by.

P.S. — We have hats too (for \$10).



***Thank you for supporting local land conservation with your purchase!***



Piedmont Land Conservancy  
P.O. Box 4025  
Greensboro, NC 27404



Non-Profit Organization  
U.S. Postage  
PAID  
Greensboro, NC 27420  
PERMIT NO. 1172

ADDRESS SERVICE REQUESTED



North Carolina's land trusts preserve land and water quality to safeguard our way of life for future generations. We work in local communities to ensure that lands are voluntarily protected for clean drinking water, recreations, tourism and farms.



## PLC Announces Musical Guests for Land Jam 2017!



*Don't miss PLC's Land Jam 2017 featuring*

*Abigail Washburn & Bela Fleck!*

*Friday, October 13, 2017 — 8:00pm*

*at the Historic Carolina Theatre  
in downtown Greensboro*

*Opening Artist, Laurelyn Dossett & Friends*

*Tickets on sale now —  
[www.carolinatheatre.com](http://www.carolinatheatre.com) or call 336-333-2605.*

email: [info@piedmontland.org](mailto:info@piedmontland.org) / web: [www.piedmontland.org](http://www.piedmontland.org) / phone: (336) 691-0088 / fax: (336) 691-0044